

RESTORATION PLANS



RESTORATION PLANS



© 2021 Verdantas. All rights reserved. Project No. 19525. TOLEDO, OH.



219 SOUTH ERIE STREET
TOLEDO, OHIO 43604-8607
TEL. 419.385.2018 FAX 614.360.0023

DESIGNED BY: JMK	DRAWN BY: JMK	CHECKED BY: PAH	PROJECT NO. 19525
---------------------	------------------	--------------------	----------------------

TOLEDO, OH
**MAUMEE RIVER ISLANDS
RESTORATION PROJECTS**

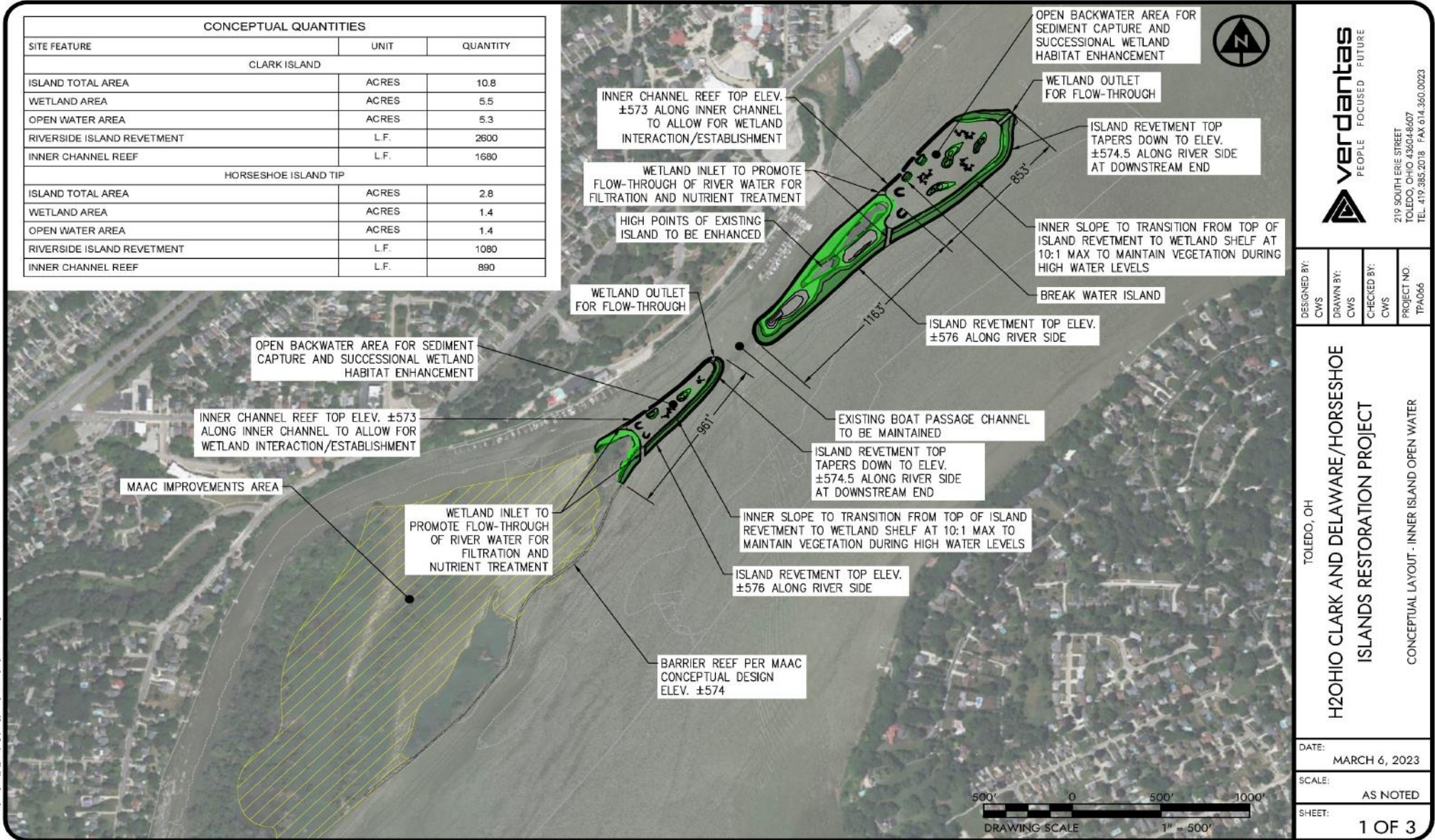
CONCEPTUAL LAYOUT

DATE:	JANUARY 16, 2024
SCALE:	AS NOTED
SHEET:	1 OF 1



H2OHIO RESTORATION PLANS

CONCEPTUAL QUANTITIES		
SITE FEATURE	UNIT	QUANTITY
CLARK ISLAND		
ISLAND TOTAL AREA	ACRES	10.8
WETLAND AREA	ACRES	5.5
OPEN WATER AREA	ACRES	5.3
RIVERSIDE ISLAND REVETMENT	L.F.	2600
INNER CHANNEL REEF	L.F.	1690
HORSESHOE ISLAND TIP		
ISLAND TOTAL AREA	ACRES	2.8
WETLAND AREA	ACRES	1.4
OPEN WATER AREA	ACRES	1.4
RIVERSIDE ISLAND REVETMENT	L.F.	1090
INNER CHANNEL REEF	L.F.	890



219 SOUTH ERIE STREET
TOLEDO, OHIO 43604-8607
TEL. 419-385-2018 FAX 419-360-0223

DESIGNED BY: CWS
DRAWN BY: CWS
CHECKED BY: CWS
PROJECT NO: TPA066

TOLEDO, OH
H2OHIO CLARK AND DELAWARE/HORSESHOE ISLANDS RESTORATION PROJECT
CONCEPTUAL LAYOUT - INNER ISLAND OPEN WATER

DATE: MARCH 6, 2023
SCALE: AS NOTED
SHEET: 1 OF 3

